

2600

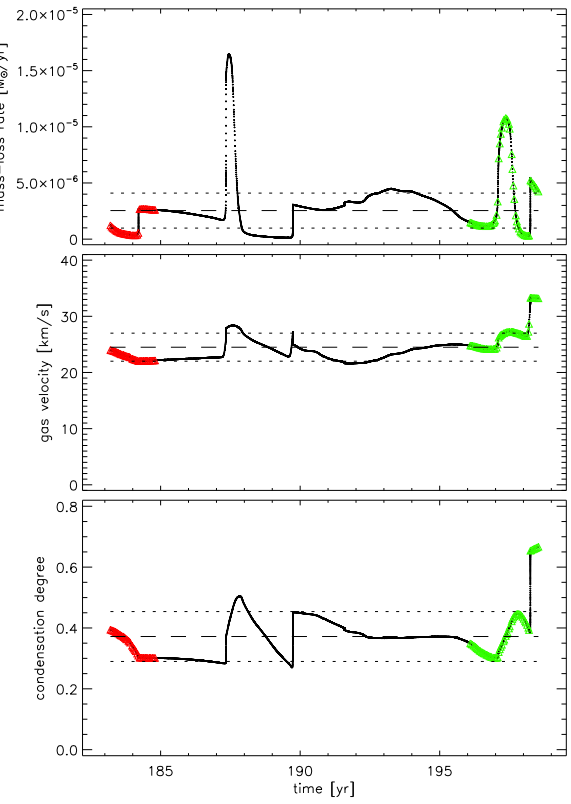
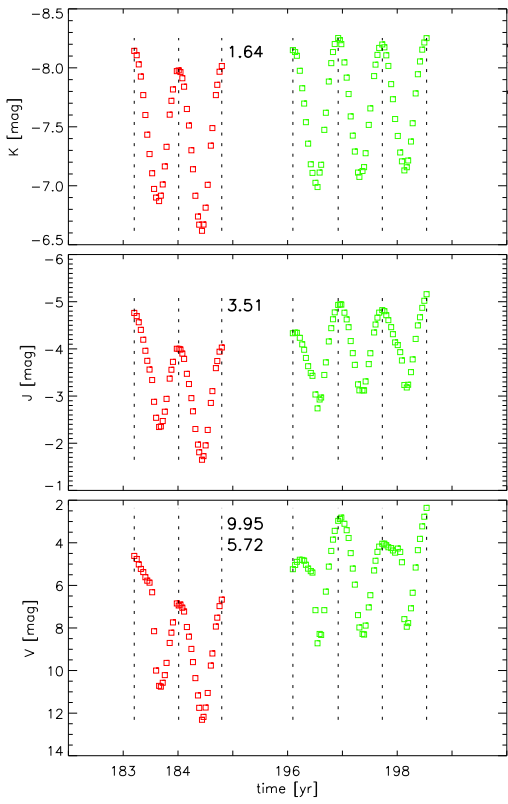
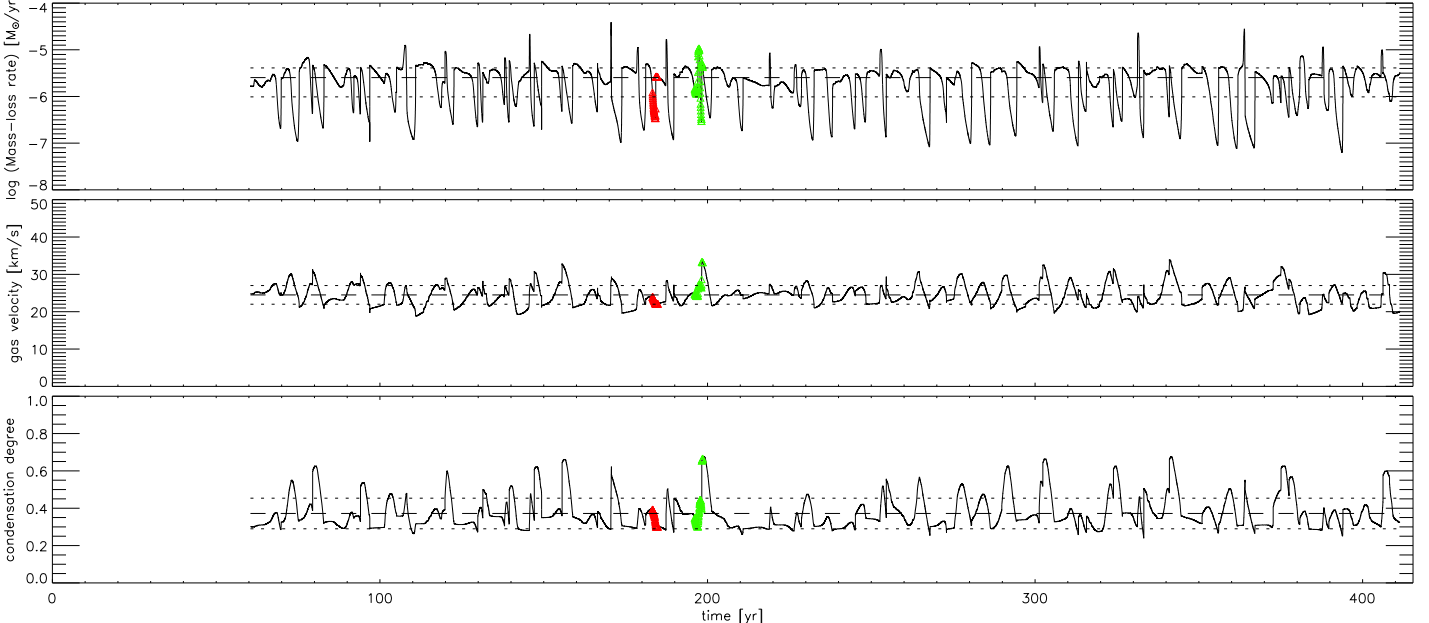
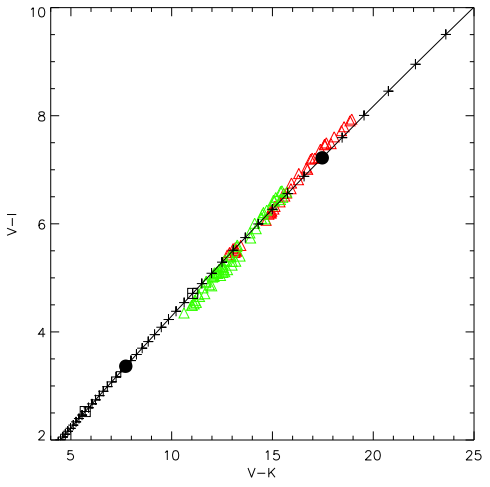
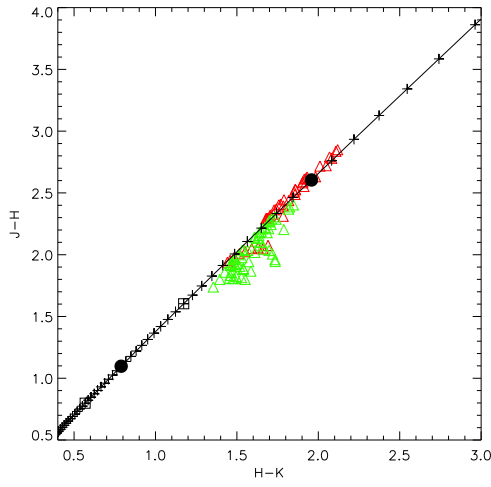
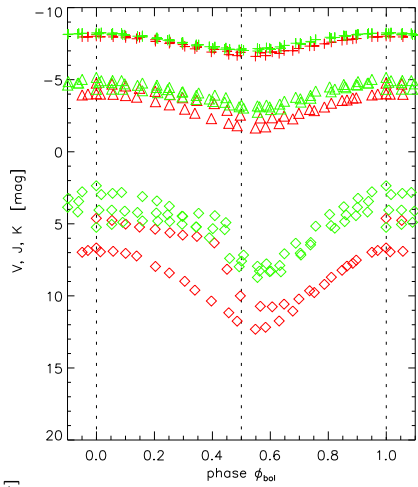
3.70

1.00

8.80

6

2.0



$T_{\text{eff}}$  2600 K  
 $\lg L$  3.70  $L_{\odot}$   
 Mass 1.00  $M_{\odot}$   
 $\lg(C-O)$  8.80  
 C/O 2.38  
 $\Delta u_p$  6 km/s  
 $f_L$  2.0  
 class wn

$\dot{M}_{\text{dot}}$   $2.54 \pm 1.56 \cdot 10^{-6} M_{\odot}/\text{yr}$   
 $u_{\infty}$   $24.50 \pm 2.50$  km/s  
 $f_{\text{cond}}$   $0.372 \pm 0.082$   
 $\rho_d/\rho_g$   $20.86 \cdot 10^{-4}$   
 Period 294. d = 0.806 yr  
 Radius 357.  $R_{\odot}$   
 $\lg g$  -0.66  
 $\Delta M_{\text{bol}}$  1.039

Colour	mean	min	max	range
(B-V)	4.28	3.24	5.91	2.67
(V-I)	5.89	4.35	7.94	3.59
(V-K)	14.09	10.61	18.93	8.32
(J-H)	2.18	1.74	2.85	1.11
(J-K)	3.85	3.09	4.97	1.88
(H-K)	1.67	1.36	2.12	0.76

Note: Time increases downwards. Scales OK for last curve (bottom black)

