

2600

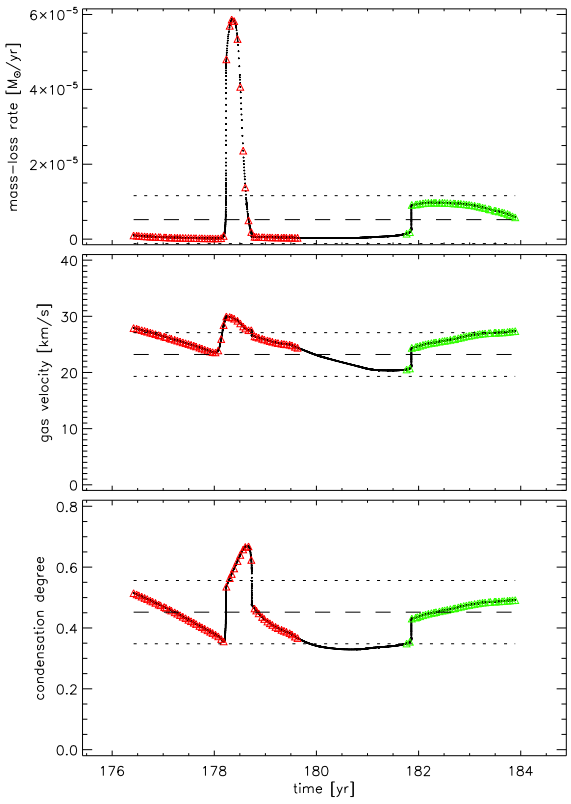
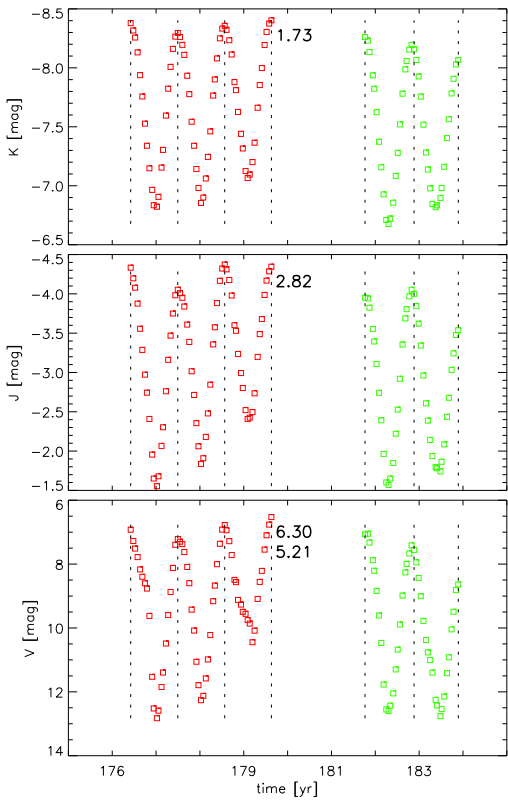
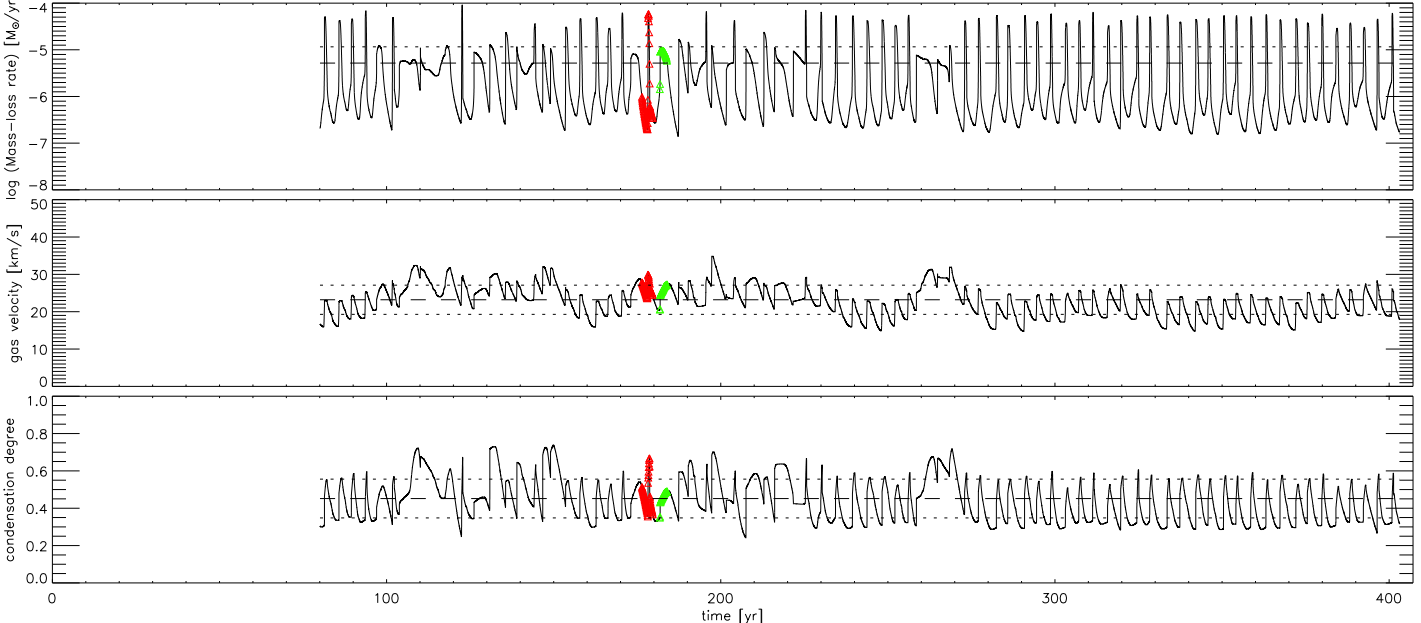
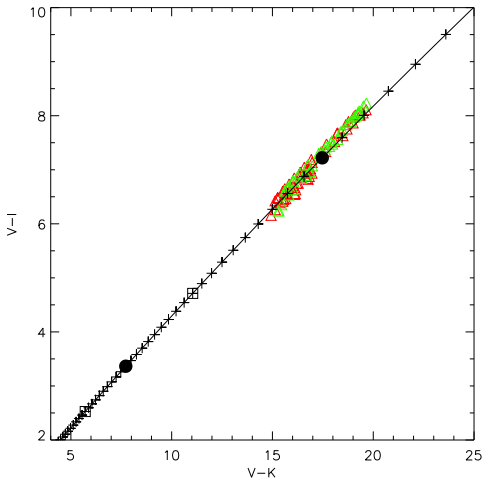
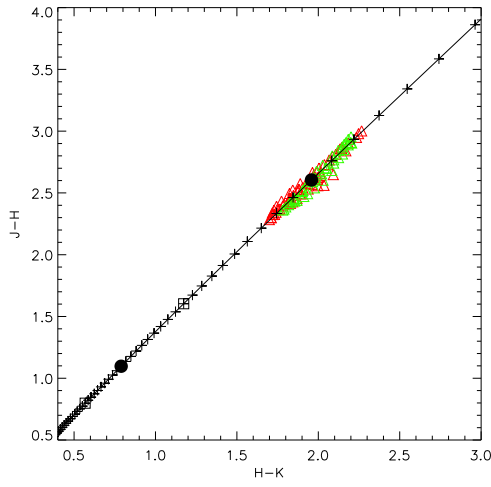
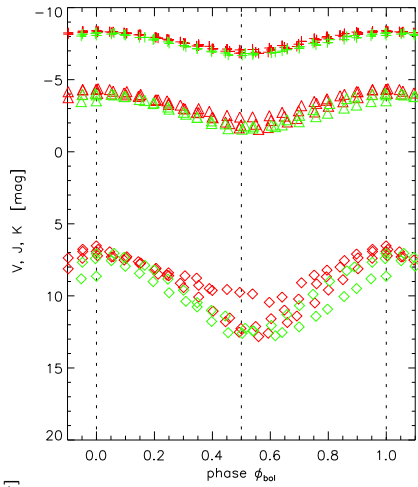
3.85

1.50

8.80

6

2.0



T_{eff} 2600 K
 $\lg L$ 3.85 L_{\odot}
 Mass 1.50 M_{\odot}
 $\lg(C-O)$ 8.80
 C/O 2.38
 Δu_p 6 km/s
 f_L 2.0
 class wn

\dot{M}_{dot} $5.20 \pm 6.40 \cdot 10^{-6} M_{\odot}/\text{yr}$
 u_{∞} 23.20 ± 3.90 km/s
 f_{cond} 0.452 ± 0.104
 ρ_d/ρ_g $25.38 \cdot 10^{-4}$
 Period 390. d = 1.068 yr
 Radius 424. R_{\odot}
 $\log g$ -0.64
 ΔM_{bol} 1.145

Colour	mean	min	max	range
(B-V)	5.21	4.36	6.09	1.73
(V-I)	7.12	6.16	8.24	2.08
(V-K)	17.04	14.93	19.66	4.73
(J-H)	2.60	2.28	3.00	0.72
(J-K)	4.56	3.98	5.27	1.29
(H-K)	1.96	1.70	2.27	0.57

Note: Time increases downwards. Scales OK for last curve (bottom black)

