

2600

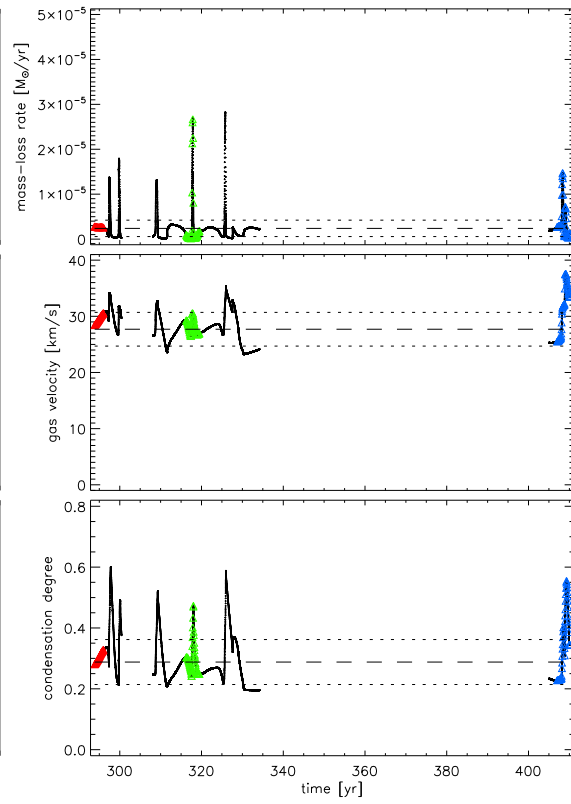
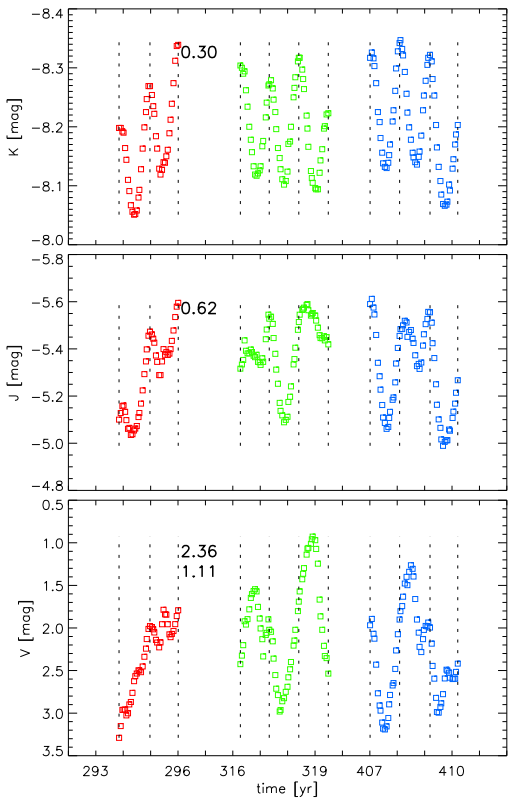
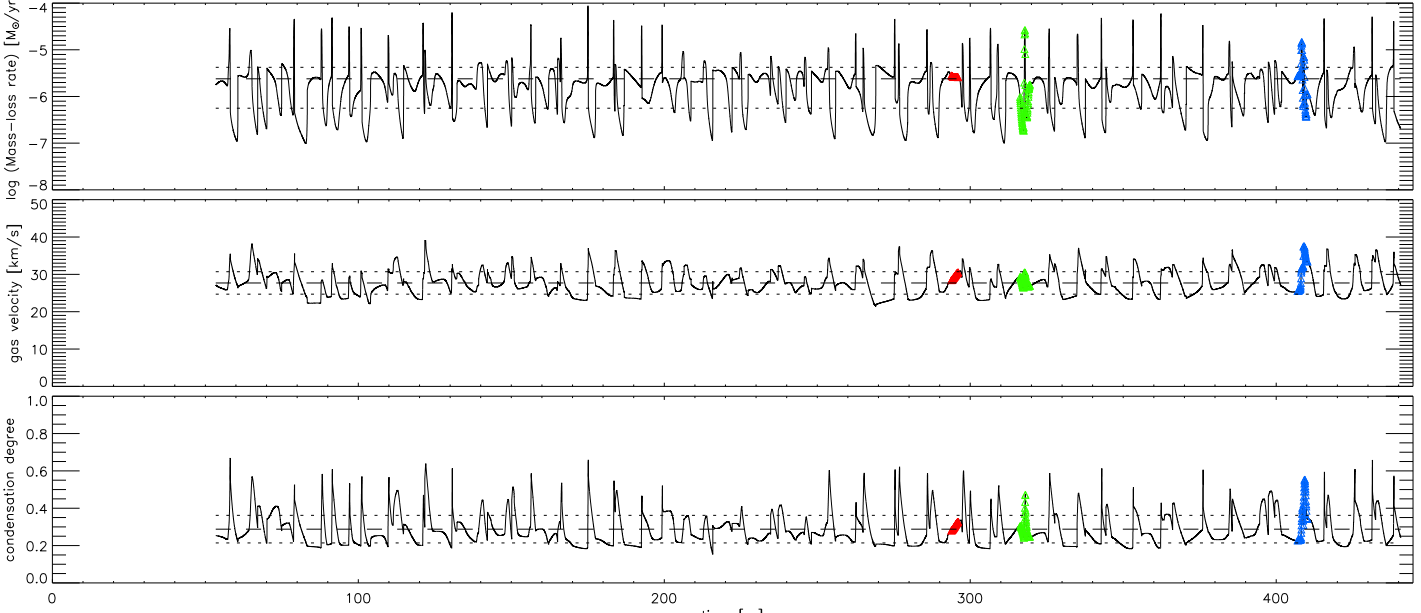
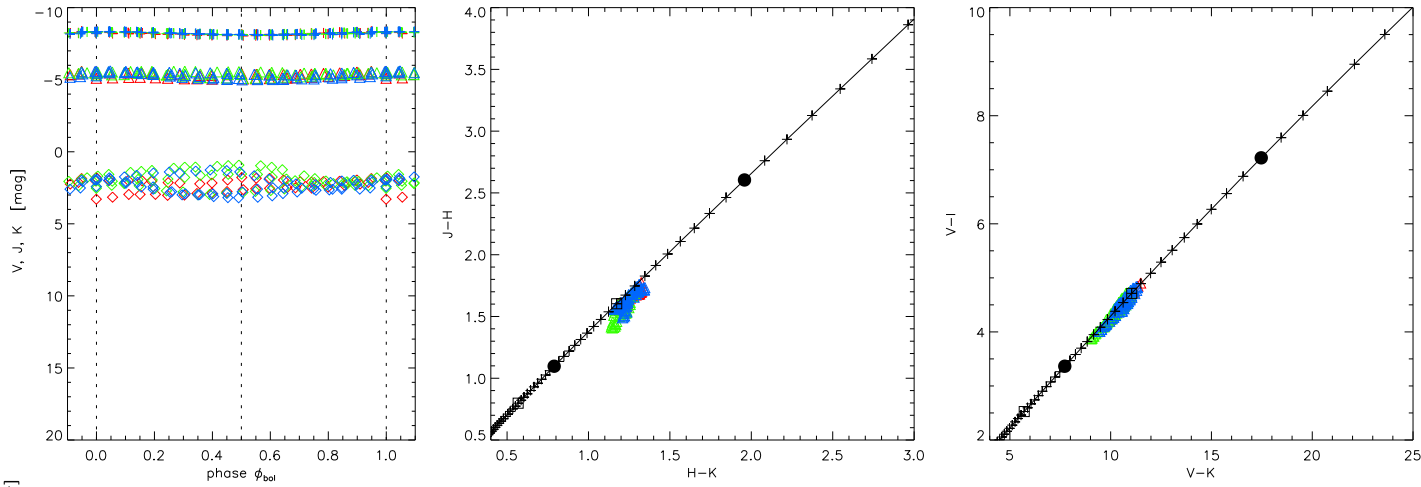
3.85

1.00

8.80

2

1.0



T_{eff}	2600 K
$\lg L$	3.85 L_{\odot}
Mass	1.00 M_{\odot}
$\lg(C-O)$	8.80
C/O	2.38
Δu_p	2 km/s
f_L	1.0
class	wn
\dot{M}	$2.39 \pm 1.83 \cdot 10^{-6} M_{\odot}/\text{yr}$
u_{∞}	27.70 ± 3.00 km/s
f_{cond}	0.288 ± 0.074
ρ_d/ρ_g	$16.16 \cdot 10^{-4}$
Period	390. d = 1.068 yr
Radius	424. R_{\odot}
$\log g$	-0.81
ΔM_{bol}	0.192
Colour	mean / min / max / range
(B-V)	3.21 / 2.84 / 3.53 / 0.69
(V-I)	4.43 / 3.87 / 4.90 / 1.03
(V-K)	10.39 / 9.03 / 11.49 / 2.46
(J-H)	1.62 / 1.41 / 1.77 / 0.37
(J-K)	2.86 / 2.55 / 3.10 / 0.55
(H-K)	1.24 / 1.14 / 1.35 / 0.21

Note: Time increases downwards. Scales OK for last curve (bottom black)

