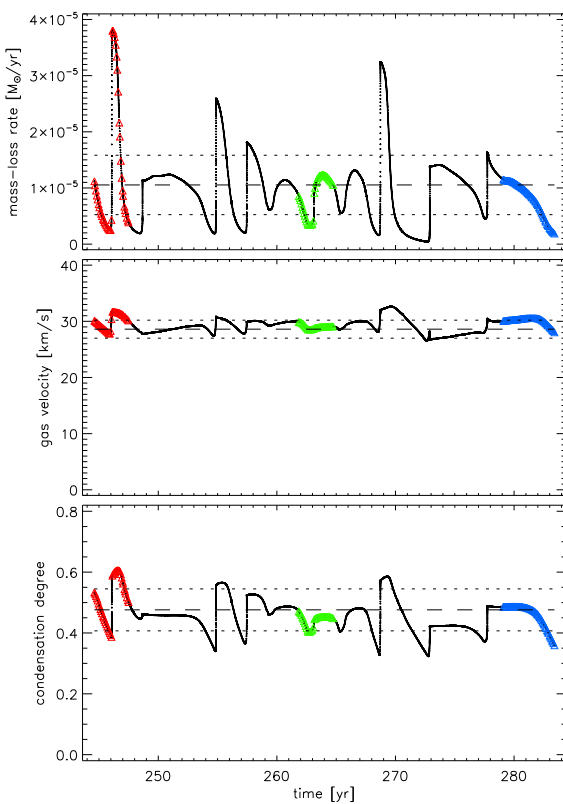
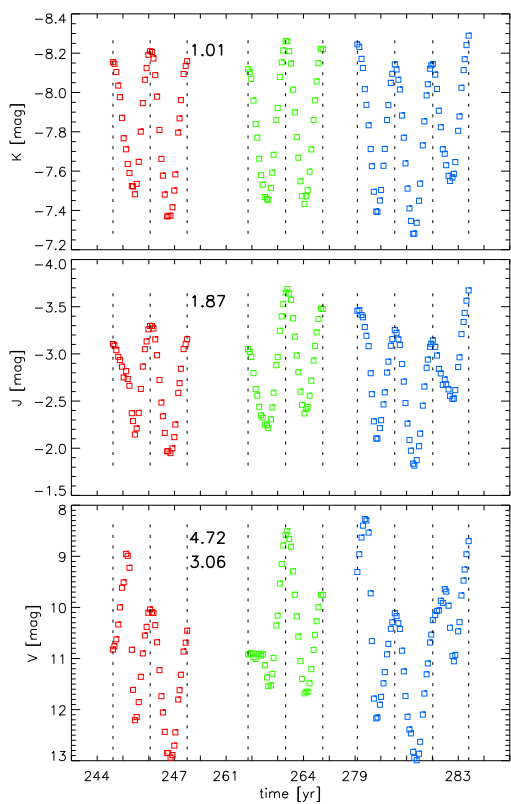
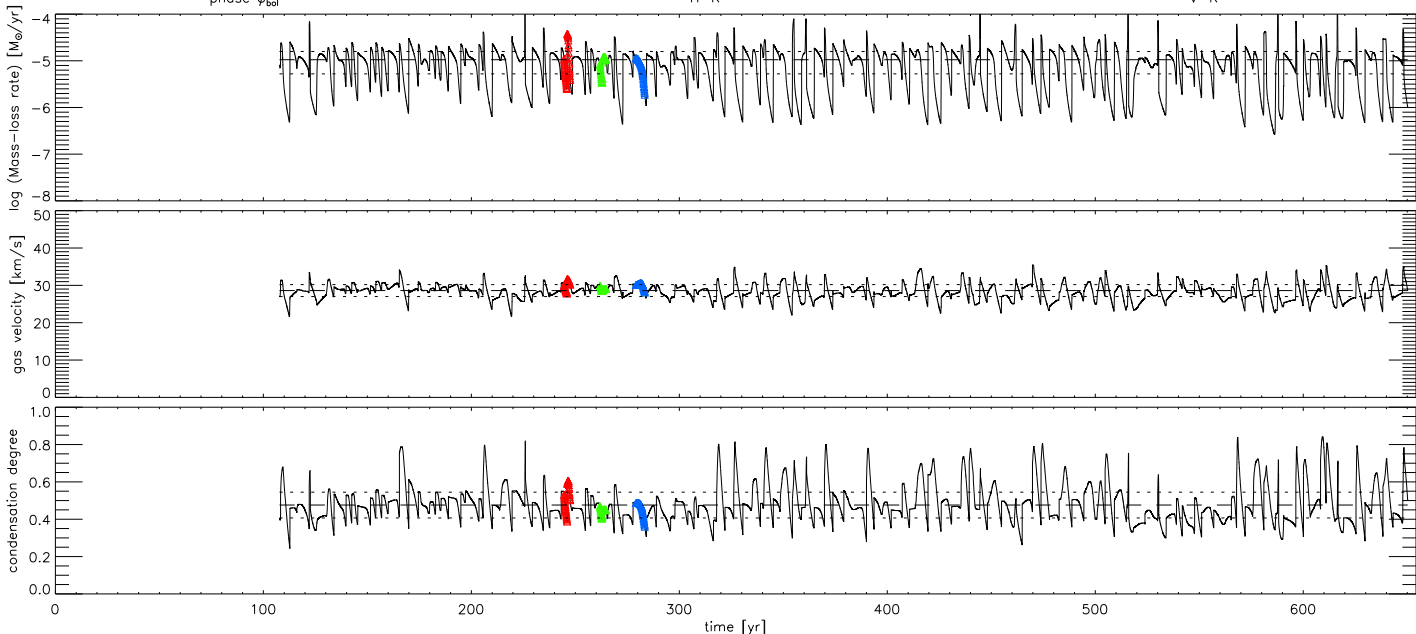
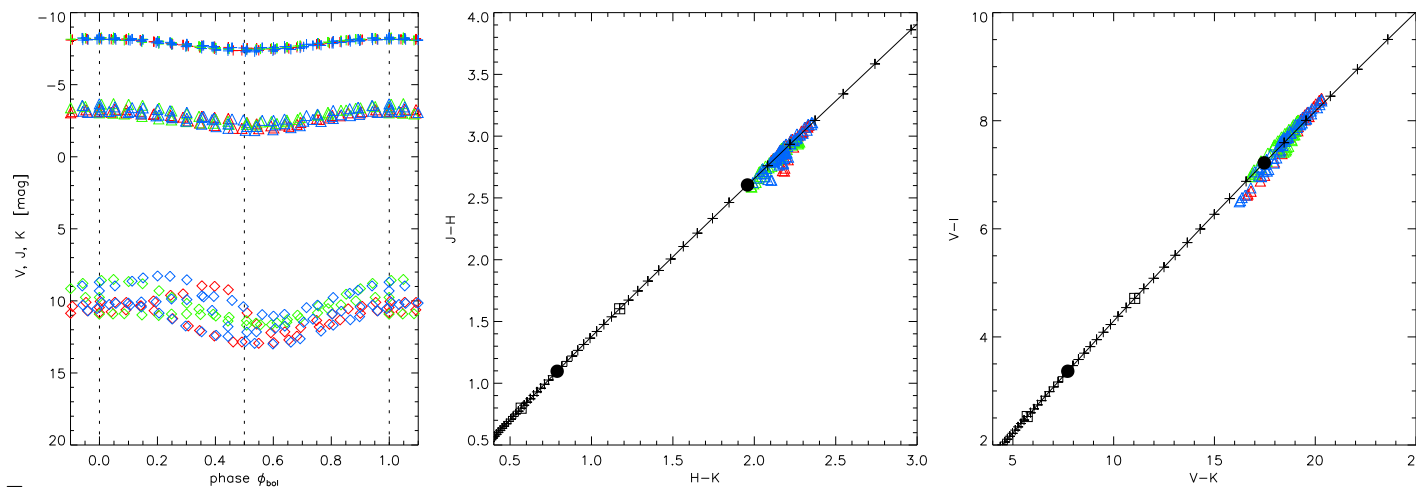


2600      4.00      1.50      8.80      6      1.0



$T_{\text{eff}}$	2600 K
$\lg L$	4.00 $L_{\odot}$
Mass	1.50 $M_{\odot}$
$\lg(C-O)$	8.80
C/O	2.38
$\Delta u_p$	6 km/s
$f_L$	1.0
class	wn
$\dot{M}_{\text{dot}}$	$10.54 \pm 5.29 \cdot 10^{-6} M_{\odot}/\text{yr}$
$u_{\infty}$	$28.60 \pm 1.60$ km/s
$f_{\text{cond}}$	$0.476 \pm 0.069$
$\rho_d/\rho_g$	$26.71 \cdot 10^{-4}$
Period	525. d = 1.437 yr
Radius	504. $R_{\odot}$
$\log g$	-0.79
$\Delta M_{\text{bol}}$	0.635
Colour	mean / min / max / range
(B-V)	5.63 / 4.69 / 6.24 / 1.55
(V-I)	7.63 / 6.50 / 8.41 / 1.91
(V-K)	18.53 / 16.24 / 20.33 / 4.09
(J-H)	2.86 / 2.59 / 3.11 / 0.52
(J-K)	5.04 / 4.57 / 5.47 / 0.89
(H-K)	2.18 / 1.98 / 2.36 / 0.38

Note: Time increases downwards. Scales OK for last curve (bottom black)

