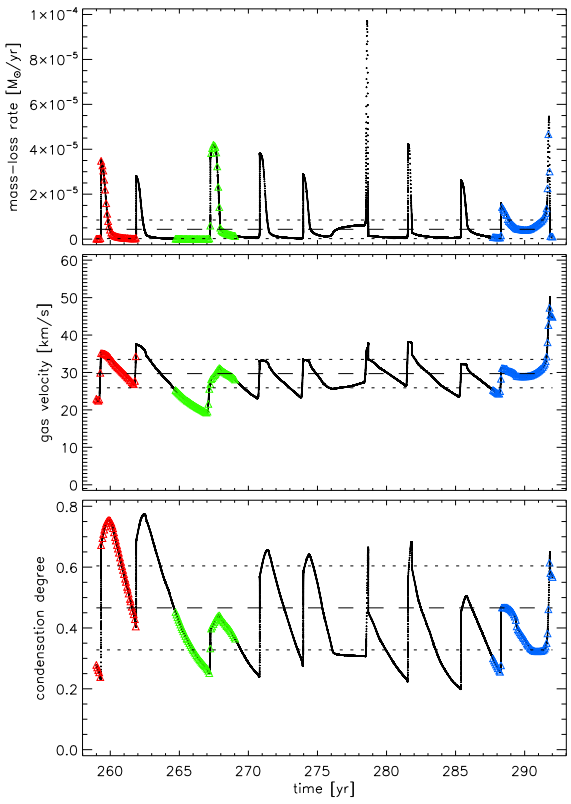
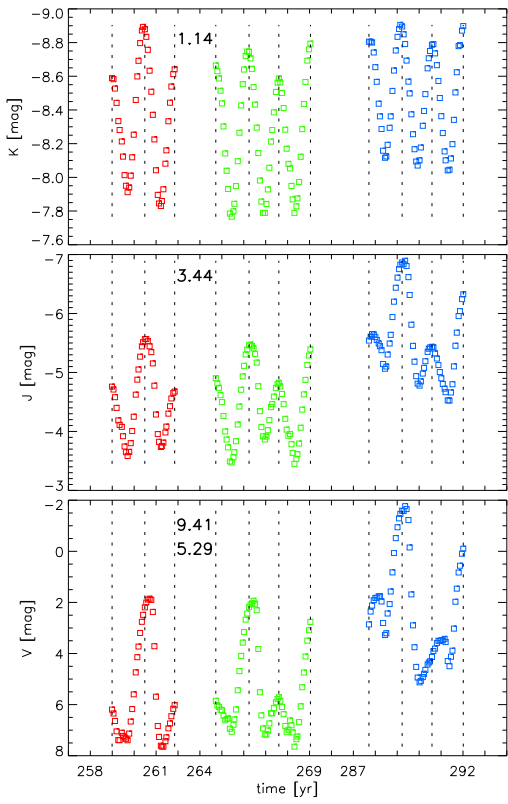
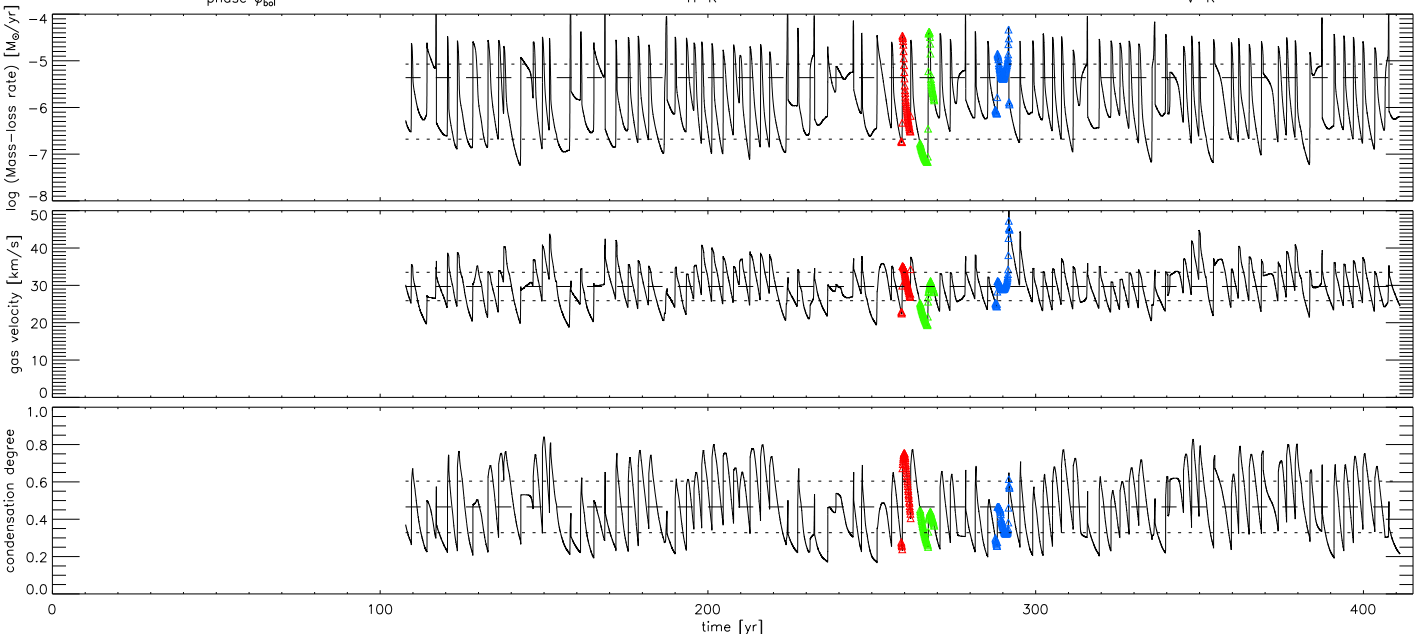
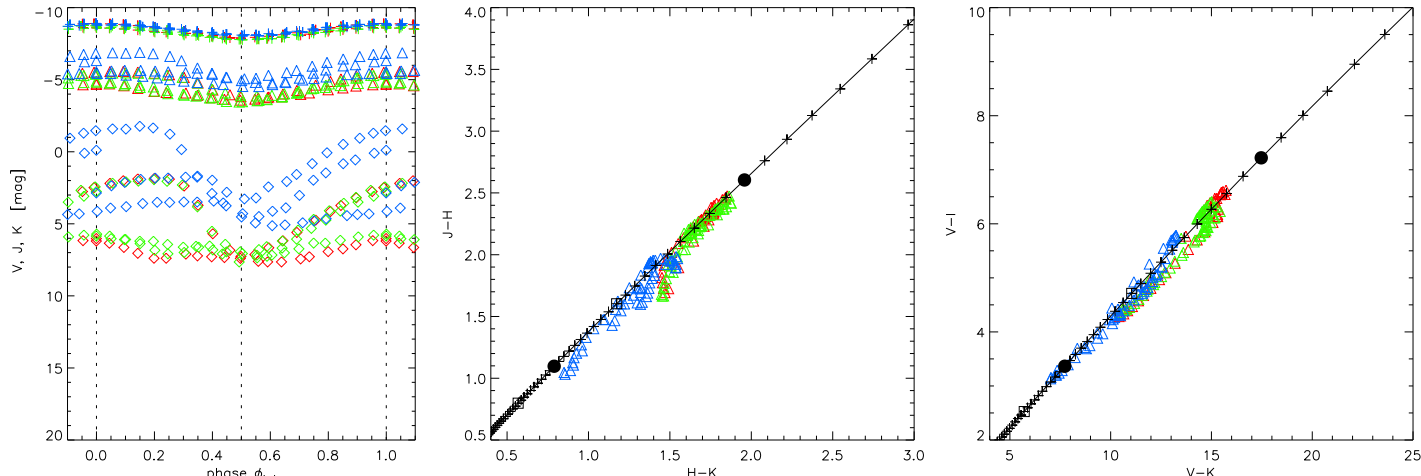


2800 4.00

1.50 8.80

6 1.0



$T_{\text{eff}}$  2800 K  
 $\lg L$  4.00  $L_{\odot}$   
 Mass 1.50  $M_{\odot}$   
 $\lg(C-O)$  8.80  
 C/O 2.38  
 $\Delta u_p$  6 km/s  
 $f_L$  1.0  
 class wn

$\dot{M}_{\text{dot}}$   $4.36 \pm 4.15 \cdot 10^{-6} M_{\odot}/\text{yr}$   
 $U_{\infty}$   $29.70 \pm 3.80$  km/s  
 $f_{\text{cond}}$   $0.466 \pm 0.138$   
 $\rho_d/\rho_g$   $26.13 \cdot 10^{-4}$   
 Period 525. d = 1.437 yr  
 Radius 434.  $R_{\odot}$   
 $\log g$  -0.66  
 $\Delta M_{\text{bol}}$  0.718

Colour	mean	min	max	range
(B-V)	3.83	2.45	4.87	2.43
(V-I)	5.28	3.13	6.62	3.49
(V-K)	12.68	7.02	15.72	8.70
(J-H)	1.99	1.03	2.48	1.44
(J-K)	3.51	1.89	4.34	2.45
(H-K)	1.52	0.85	1.88	1.03

Note: Time increases downwards. Scales OK for last curve (bottom black)

